

Customer Guide for Submitting a Modification, a Renewal, and a Termination Request for Network Service in NITS on OASIS

Process Owner: Brad Finkbeiner

Originally Published: 7/21/2017

Revised: N/A

Version: 1.1

Approved By:	<i>Brad Finkbeiner</i>	8/14/2018
	Process Owner Signature	Date

“Southwest Power Pool, Inc. (SPP) hereby disclaims any warranty, express or implied, as to the accuracy, completeness or usefulness of the information included in this document.”

REVISION HISTORY CHART

Version	Revised By	Description of Modifications	Revision Date
1.0	SPP Staff	Customer Guide for Submitting a Modification or a Renewal Request for Network Service in NITS on OASIS	5/9/2018
1.1	SPP Staff	Minor change to Section 6	4/16/2019

Table of Contents

REVISION HISTORY CHART	2
PURPOSE	4
BACKGROUND	4
REQUIREMENTS	4
PROCESS FLOWCHART	4
MODIFY NITS SERVICE APPLICATION	6
SECTION 1: MODIFYING NITS SERVICE APPLICATION	6
MODIFICATION OF LOAD	8
SECTION 3: MODIFICATION OF LOAD TO THE NITS APPLICATION	8
SECTION 3A: REQUIRED FIELDS FOR “ADD/MODIFY LOAD”	11
SECTION 3B: OPTIONAL FIELDS FOR “ADD/MODIFY LOAD”	11
SECTION 3C: DO NOT CHANGE FIELDS FOR “ADD/MODIFY LOAD”	11
MODIFYING A NETWORK RESOURCE	12
GENERATION DETAILS	12
Section 4: Modifying Generation Information for the Owned Network Resource	12
Section 4a: Required Fields for “Add/Modify Generation”	15
Section 4b: Optional Fields for “Add/Modify Generation”	15
Section 4c: Do Not Change Fields for “Add/Modify Generation”.....	15
RESOURCE DETAILS	17
Section 5: Modifying Resource Information for the Owned Network Resource.....	17
Section 5a: Required Fields for “Add/Modify Resource”	20
Section 5b: Optional Fields for “Add/Modify Resource”	20
Section 5c: Do Not Change Fields for “Add/Modify Resource”	20
DESIGNATING EXTENSION OF THE NETWORK RESOURCE (RENEWALS)	21
Section 6: Designation Extension of Existing Resource (Renewals).....	21
Section 6a: Required Fields for “Add NITSDNR”	23
Section 6b: Optional Fields for “Add NITSDNR”	23
Section 6c: Do Not Change Fields for “Add NITSDNR”	23
VIEW NITS APPLICATION SUMMARY	24
APPLICATION SUMMARY	24
VIEW DESIGNATED NETWORK RESOURCES (DNRS) SUMMARY	26
DNR SUMMARY	26
DEFICIENT REQUESTS	28
CORRECTING A DEFICIENT REQUEST	28

Purpose

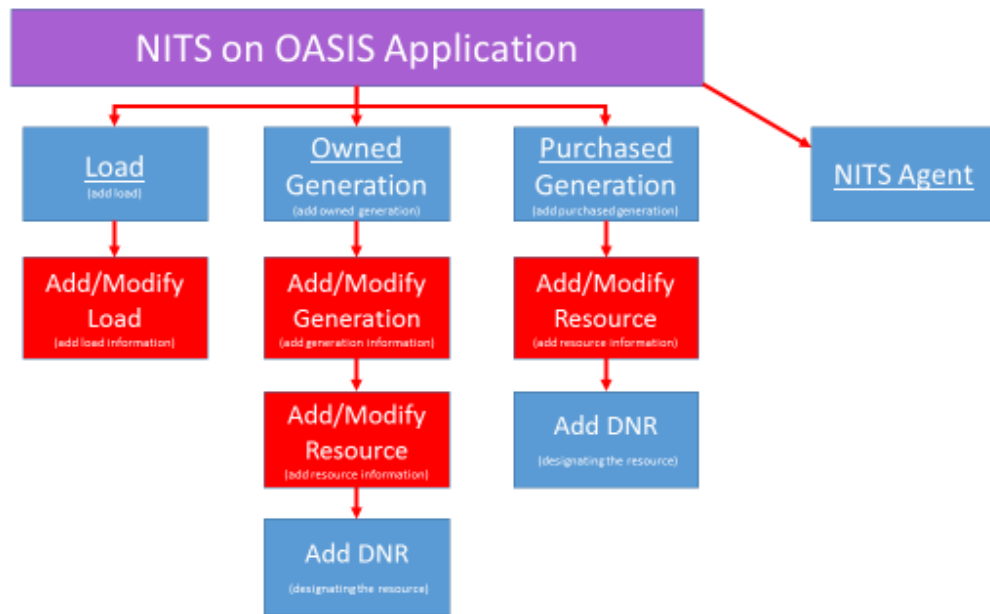
This document defines the necessary steps required for a network transmission customer to renew, terminate, or modify a request for Network Integrated Transmission Service (NITS) using the NITS on OASIS templates. Timing requirements and required fields are outlined as well.

Background

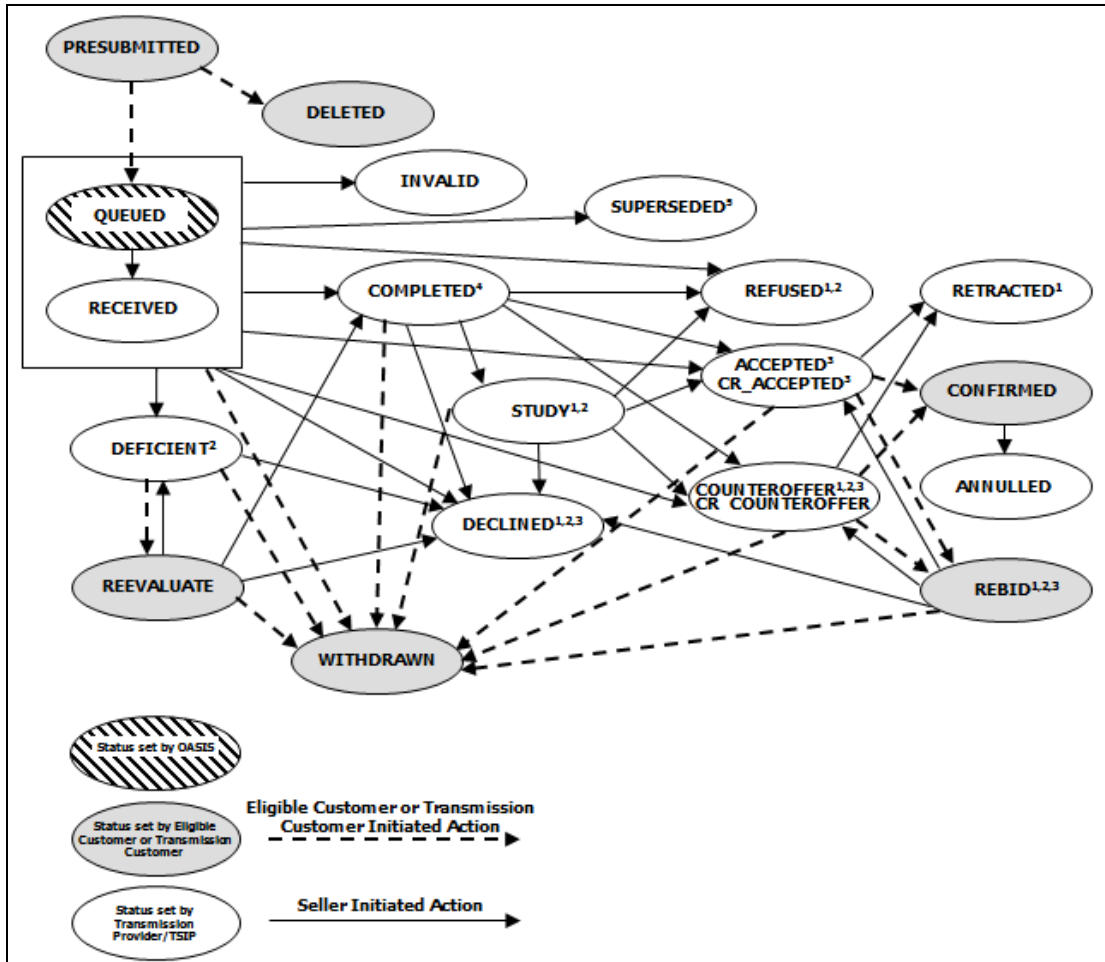
Requirements

- Access to OASIS:
 - <https://www.oasis.oati.com/cgi-bin/webplus.exe?Script=/woa/woa-login.wml>

Process Flowchart



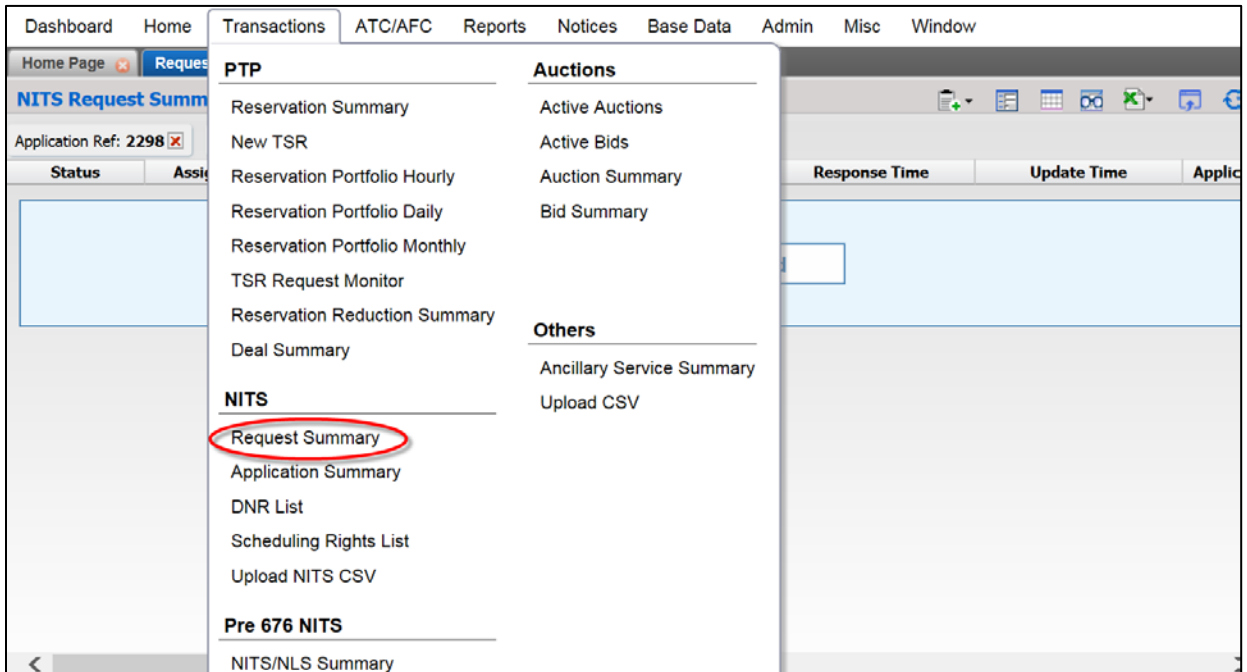
Process Flow (Status and Responsible Party)




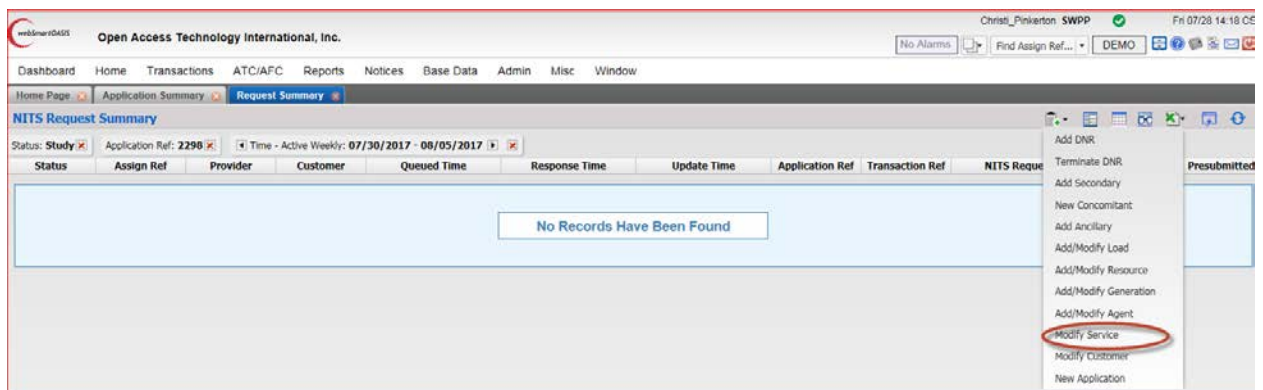
MODIFY NITS SERVICE APPLICATION

Section 1: Modifying NITS Service Application

1. Log into OASIS: <https://www.oasis.oati.com/cgi-bin/webplus.exe?Script=/woa/woa-login.wml>
2. In “Transactions” under NITS, select “Request Summary”




3. Select the New Request  icon in the upper, right-hand corner of the gray band above the field headers
4. Select “Modify Service”



5. Select the Provider and Application Ref:

Figure 1: In this example, King Candy, from AEPM, has successfully updated the stop date for the NITS application for Candy Land.

6. When all required fields are completed (highlighted in example above), select the Submit  at the upper, right-hand side of the template
7. A “Save” window will open containing the new Application Ref (all service TSRs under a Service Agreement are associated with the same Application Ref) and the Assignment Ref (TSR number) related to the NewNITSApplication.

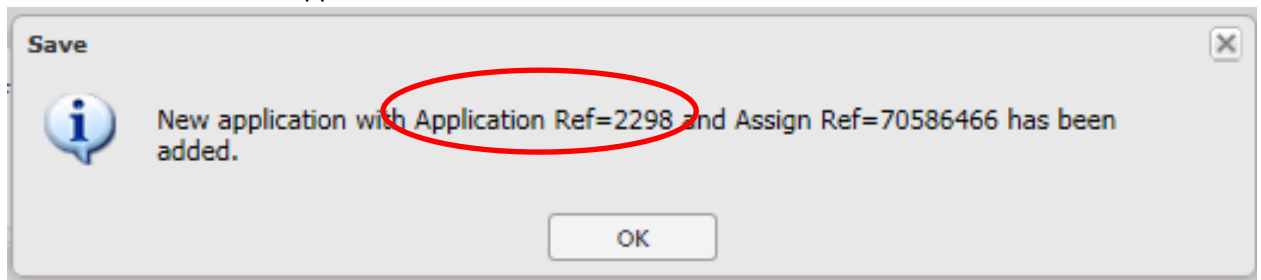


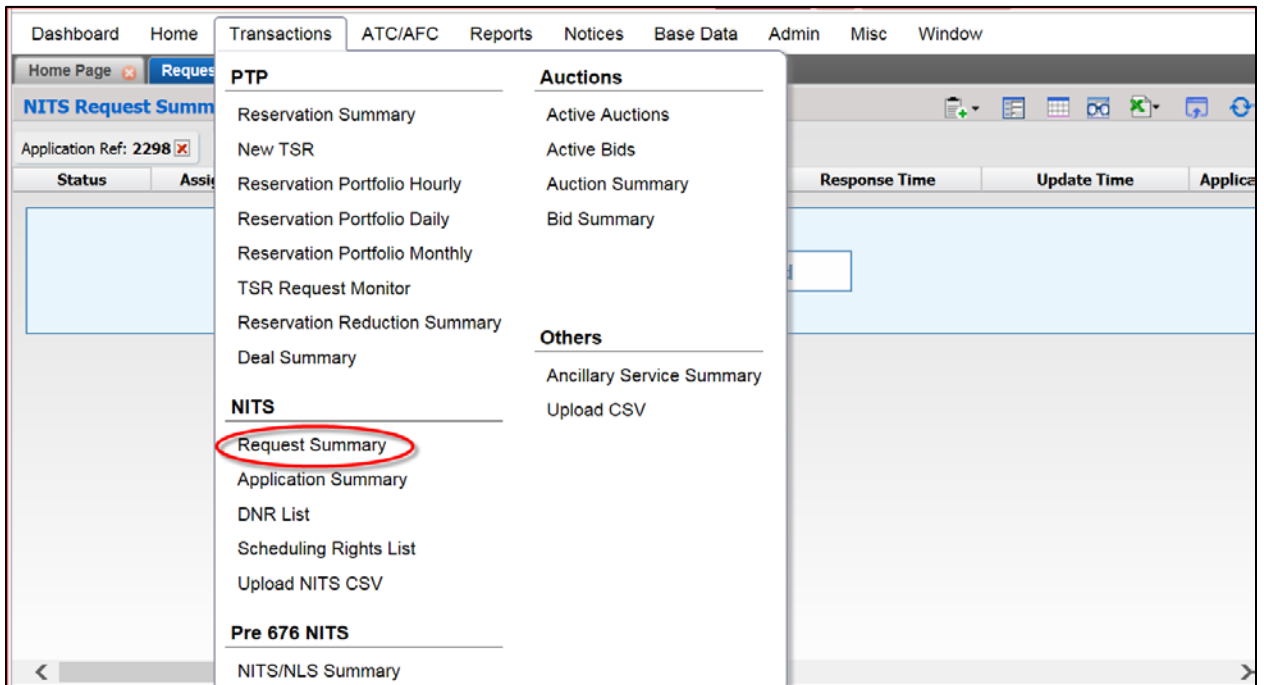
Figure 2: You will need the Application Ref for all other request templates related to this service (“Add/Modify Load,” “Add/Modify Generation,” “Add/Modify Resource” and “Add DNR”)


MODIFICATION OF LOAD

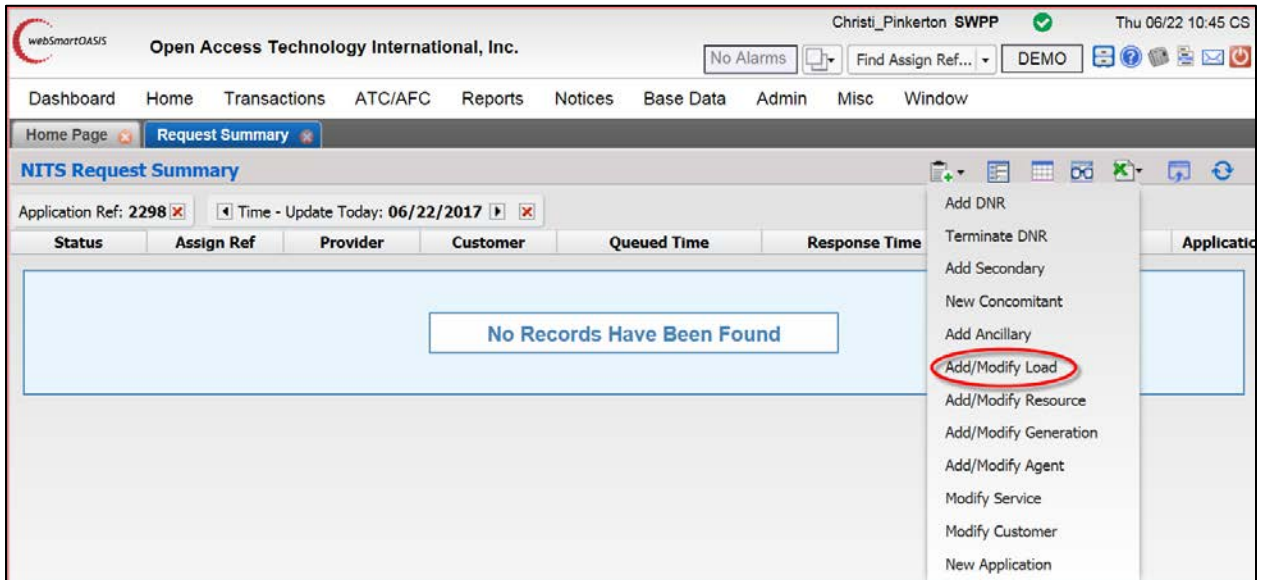
You will need to know the “Application Ref” and “LoadName” in order to complete this request template.

Section 3: Modification of Load to the NITS Application

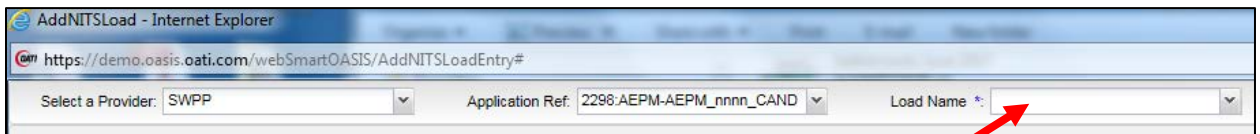
1. Log into OASIS: <https://www.oasis.oati.com/cgi-bin/webplus.exe?Script=/woa/woa-login.wml>
2. In “Transactions” under NITS, select “Request Summary”



3. Select the New Request  icon in the upper, right-hand corner of the gray band above the field headers
4. Select “Add/Modify Load”



5. Populate the Application fields:



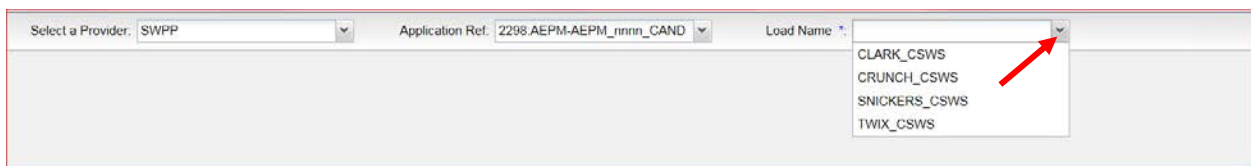
5.1. "Select a Provider:"

5.1.1. Select "SWPP" in this field

5.2. "Application Ref.:"

5.2.1. Enter your "Application Ref" here – for this example, we will use Application Ref # 2298


5.3. "Load Name *:" Select the appropriate Load Name from the Drop Down menu

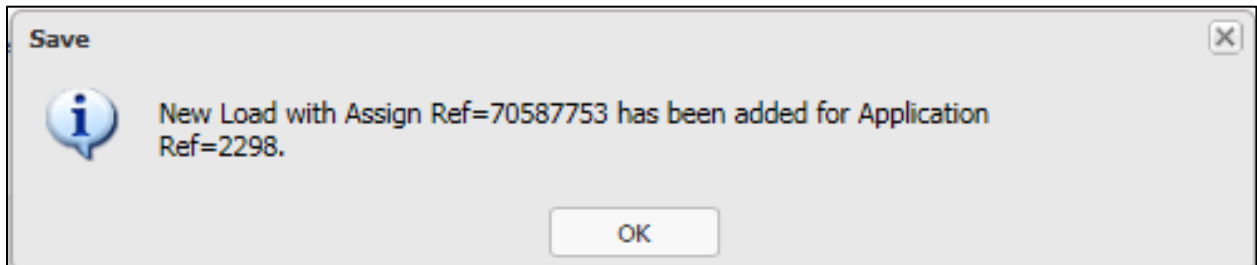


6. The Load name will be populated in NITS Load Description section, and other items in the Application Fields are ready to be modified now:

The screenshot shows a web-based form for 'NITS Load Description'. At the top, there are dropdown menus for 'Select a Provider' (SWPP), 'Application Ref.' (2298 AEPM-AEPM_nnnn_CAND), and 'Load Name *' (SNICKERS_CSWS). Below this is a 'Request Information' section with fields for 'Provider' (SWPP), 'Application Ref.' (2298), 'Status' (QUEUED), and 'Preconfirmed' (NO). There are also text areas for 'Status Comments', 'Customer Comments', 'Provider Comments', and 'Seller Comments'. The 'NITS Load Description' section contains fields for 'Load Name' (SNICKERS_CSWS), 'Load Area' (SWPP), 'POD' (CSWS), 'Sink' (CSWS), 'Load Substation', 'Load Voltage', 'Load Type' (FIXED), 'Forecast Method' (ON_OASIS), 'Effective Start' (12/01/2017 00:00:00 CS), 'Effective Stop' (12/01/2022 00:00:00 CS), and a 'Load Description' text area. A green circular 'Submit' icon is visible in the top right corner of the form area.

Figure 3: In this example, Load Request Snickers_CSWS can be modified for effective start and stop dates, pending validations.

7. When all required fields are completed (highlighted in example above), select the Submit  icon at the upper, right-hand side of the template
8. A “Save” window will open containing the “AddNITSLoad” Assignment Ref and the “Application Ref” it was added to.



Section 3a: Required Fields for “Add/Modify Load”

1. Provider: For SPP customers, this field will be “SWPP”
2. Application Ref: The Application Ref # associated with the load request
3. Load Name: A name that will describe the load being added to the NITS application. Once you enter the load name and submit, the Load name will be populated in NITS Load Description section, and other items in the Application Fields should be completed now.
4. Status:
 - 4.1. Queued: If this option is selected, once you hit submit, the application will go into a queued state and if everything is completed correctly will automatically go to either an “Accepted” state or to a “Confirmed” state depending on your selection in the “Preconfirmed” field
 - 4.2. Presubmitted: If this option is selected, when you hit submit, the application will be saved and the customer can continue working on it until it is ready to be submitted in a “Queued” state
5. Preconfirmed:
 - 5.1. No: Customer will need to “confirm” request once it has been accepted
 - 5.2. Yes: Request will automatically go into a “Confirmed” state if everything is completed correctly
6. Load Area: If within SPP footprint, use “SWPP,” otherwise, use the registered area in OASIS for the load
7. POD: The OASIS Point of Delivery for the request
8. Sink: The OASIS Sink for the Load request
9. Forecast Method: Use “ON_OASIS” to place forecast in OASIS, otherwise use “OFF_OASIS”
10. Effective Start Time: Must be submitted no later than 60 days in advance of queue date.
(For Renewals, Tariff Requirements in Section 2.2 will apply.)
11. Effective Stop Time: Cannot be less than 1 year after start date

Section 3b: Optional Fields for “Add/Modify Load”

1. Customer Comments: optional field for customer use
2. Load Description: optional field for Customer use.
3. Load Substation: optional field
4. Load Voltage: optional field

Section 3c: Do Not Change Fields for “Add/Modify Load”

1. Status Comments: Please do not populate this field
 - 1.1. This field will describe any errors encountered once the request has been submitted
2. Provider Comments: Please do not populate this field
3. Seller Comments: Please do not populate this field
4. Load Type: Use Default (FIXED) – do not change

MODIFYING A NETWORK RESOURCE

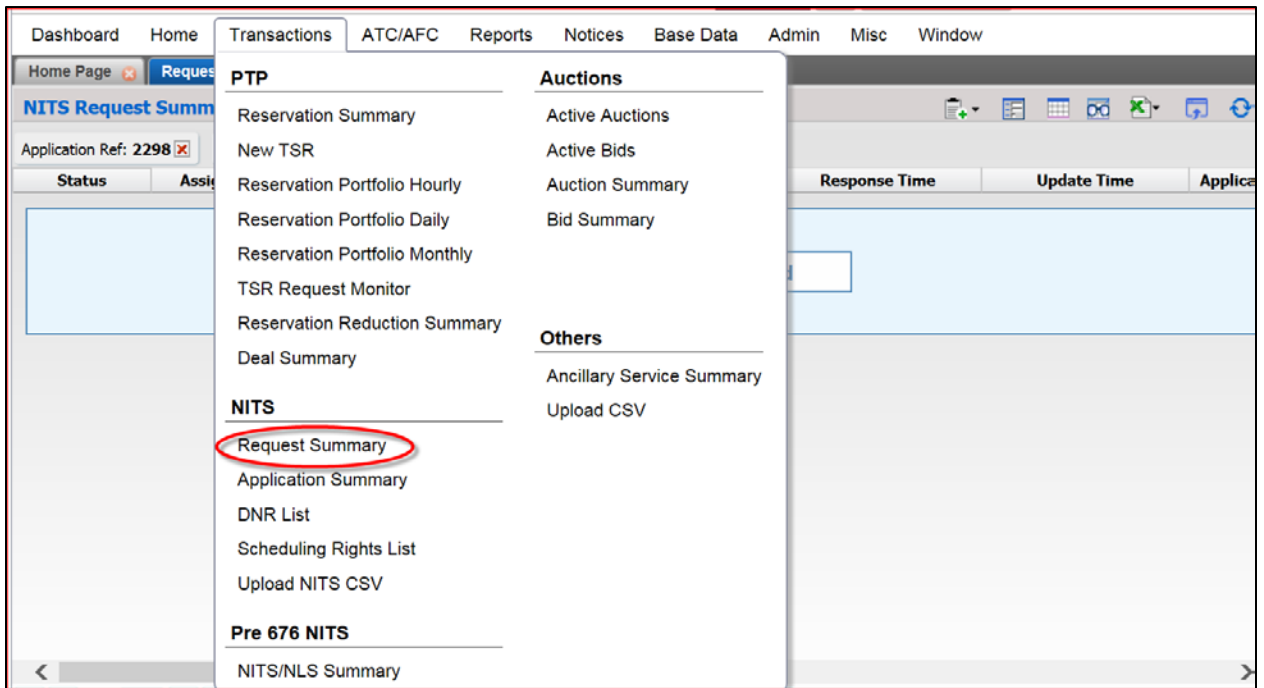
Generation Details


This template is only used for “Owned Generation”, for “Purchased Generation” skip to Section 5.

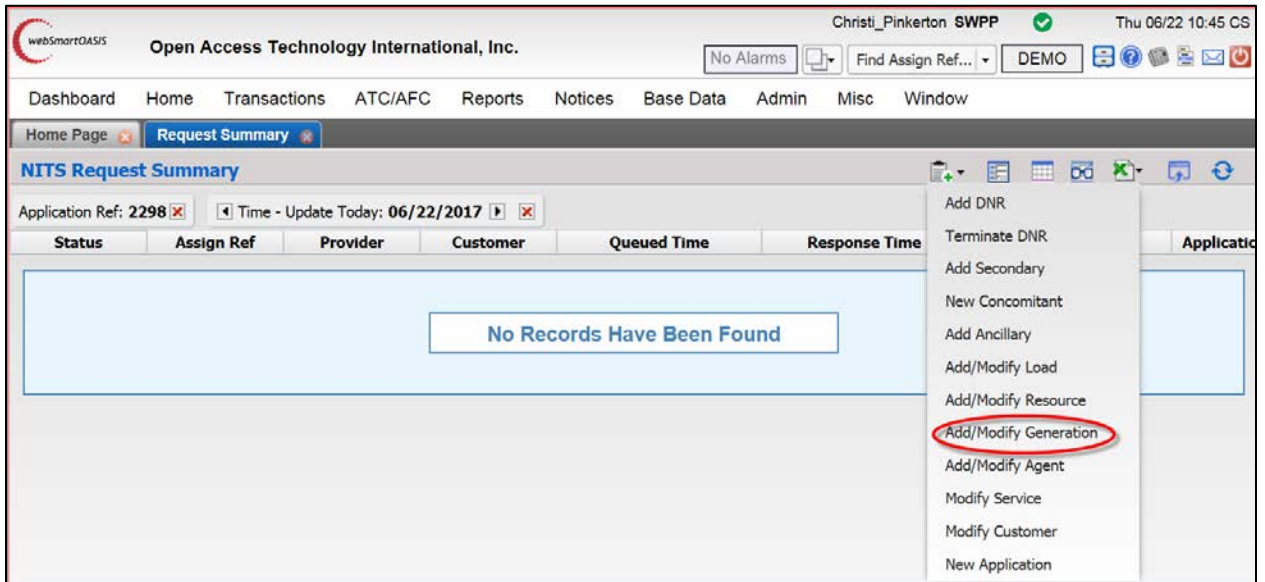
You will need to know the “Application Ref” and the “Resource Name” in order to complete this request template.

Section 4: Modifying Generation Information for the Owned Network Resource

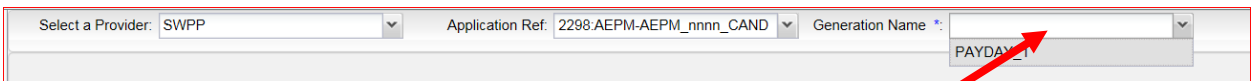
1. Log into OASIS: <https://www.oasis.oati.com/cgi-bin/webplus.exe?Script=/woa/woa-login.wml>
2. In “Transactions” under NITS, select “Request Summary”



3. Select the New Request  icon in the upper, right-hand corner of the gray band above the field headers
4. Select “Add/Modify Generation”



5. Populate the Application fields:



5.1. "Select a Provider:"

5.1.1. Select "SWPP" in this field

5.2. "Application Ref:"

5.2.1. Enter your "Application Ref" here – for this example, we will use Application Ref # 2298

5.3. "Generation Name *:" Select the Generation Name from the Drop Down menu

6. The Generator name will be populated in NITS Generation Description section, and other items in the Application Fields are ready to be modified now:

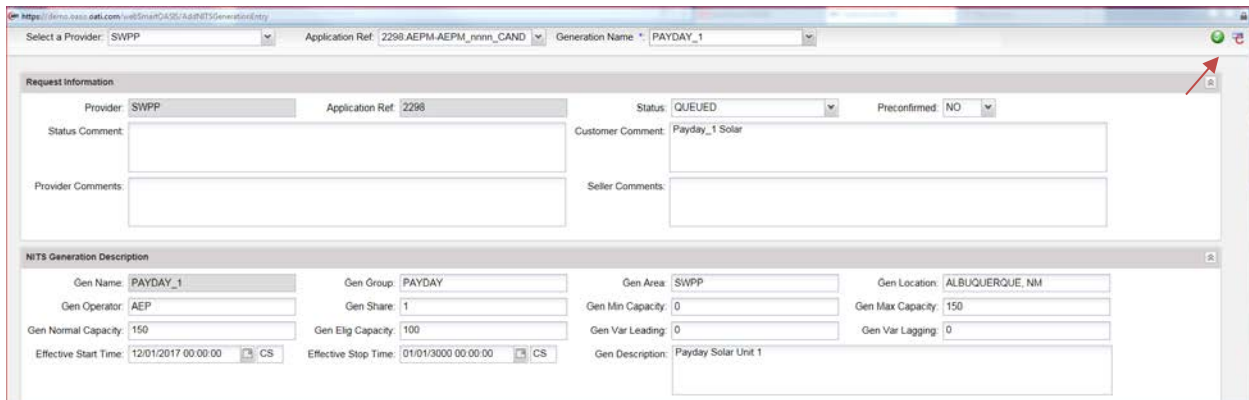

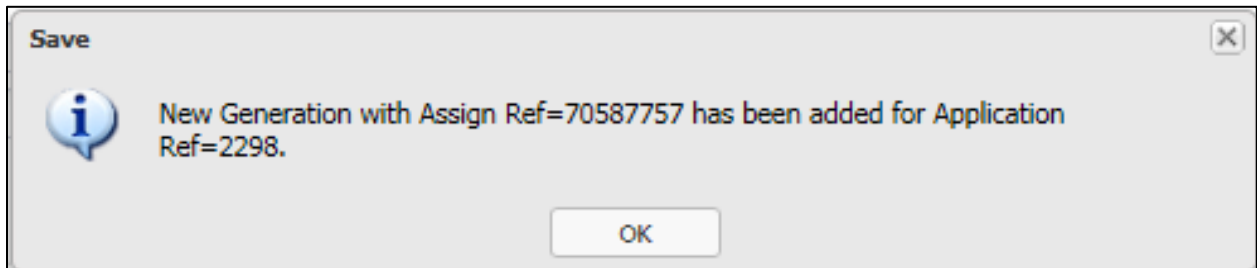


Figure 4: In this example, King Candy can modify Generation Request Payday_1.

7. When all required fields are completed, select the Submit  icon at the upper, right-hand side of the template
8. A “Save” window will open containing the “AddNITSGeneration” Assignment Ref and the “Application Ref” it was added to.



Section 4a: Required Fields for “Add/Modify Generation”

1. Provider: For SPP customers, this field will be “SWPP”
2. Application Ref: The Application Ref # associated with the generation request
3. Generation Name: A name that will describe the generation name and unit number being added to the NITS application, for example: Payday_1. Once you submit, the Generator name will be populated in NITS Generation Description section, and other items in the Application Fields are ready to be completed now:
4. Status:
 - 4.1. Queued: If this option is selected, once you hit submit, the application will go into a queued state and if everything is completed correctly will automatically go to either an “Accepted” state or to a “Confirmed” state depending on your selection in the “Preconfirmed” field
 - 4.2. Presubmitted: If this option is selected, when you hit submit, the application will be saved and the customer can continue working on it until it is ready to be submitted in a “Queued” state
5. Preconfirmed:
 - 5.1. No: Customer will need to “confirm” request once it has been accepted
 - 5.2. Yes: Request will automatically go into a “Confirmed” state if everything is completed correctly
6. Gen Group: For example, all Payday units will be under Payday
7. Gen Area: If within SPP footprint, use “SWPP,” otherwise, use the registered area in OASIS for the generation
8. Gen Location: City and State of unit
9. Gen Operator: OASIS Customer Code of Operator
10. Gen Share: Percentage of ownership of the unit (for 100% enter 1, for 50% enter 0.5)
11. Gen Min Capacity: Greater than or equal to 0
12. Gen Max Capacity: **Cannot be less than** the “Gen Elig” Capacity
13. Gen Normal Capacity: Greater than or equal to 0
14. Gen Elig Capacity: Cannot be less than sum of the designated amounts
15. Gen Var Leading: Greater than or equal to 0
16. Gen Var Lagging: Greater than or equal to 0
17. Effective Start Time: Must be submitted no later than 24 hours in advance of queue date
18. Effective Stop Time: Cannot be less than 1 year after start date and must cover term of the intended designation

Section 4b: Optional Fields for “Add/Modify Generation”

1. Customer Comments: optional field for customer use
2. Generation Description: optional field for Customer use.

Section 4c: Do Not Change Fields for “Add/Modify Generation”

1. Status Comments: Please do not populate this field
 - 1.1. This field will describe any errors encountered once the request has been submitted
2. Provider Comments: Please do not populate this field

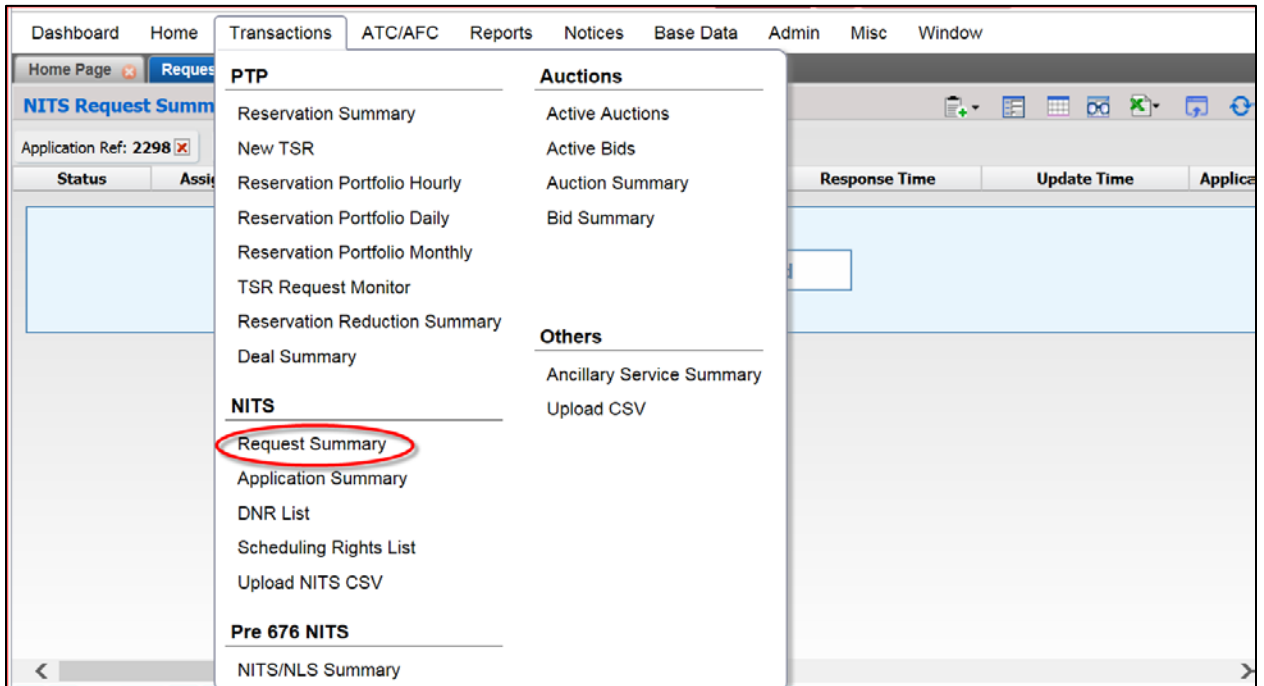
3. Seller Comments: Please do not populate this field


Resource Details

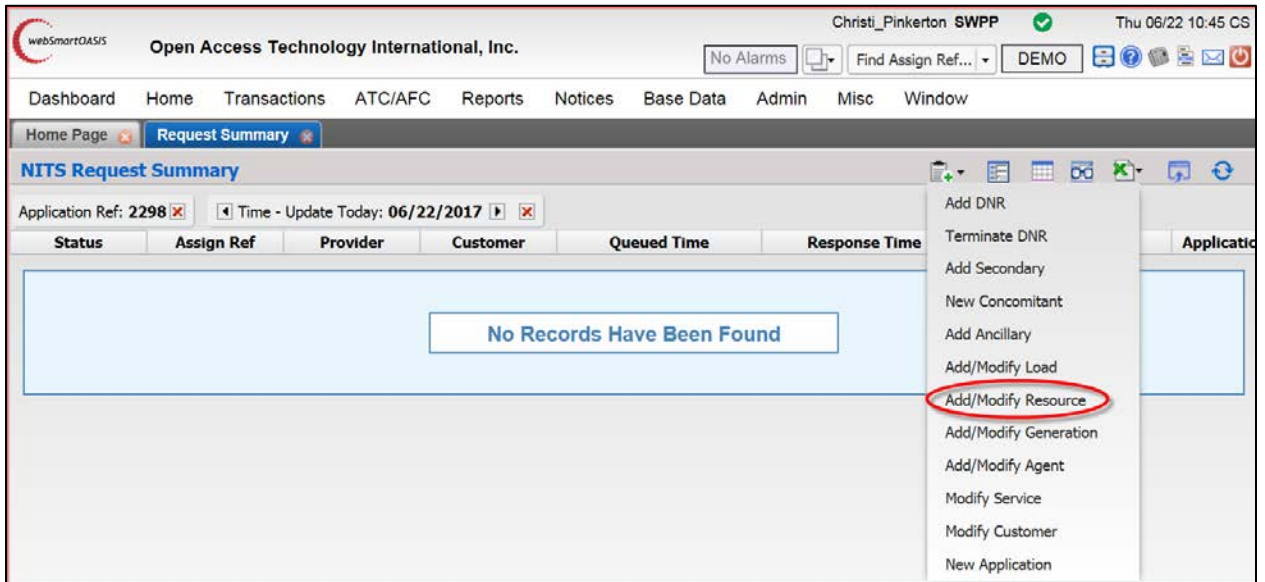
You will need to know the “Application Ref” and the “Resource Name” in order to complete this request template.

Section 5: Modifying Resource Information for the Owned Network Resource

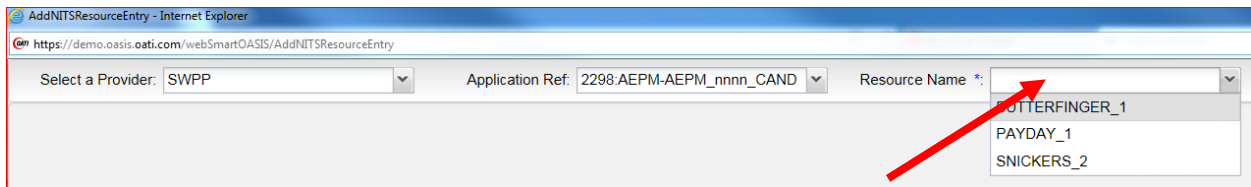
1. Log into OASIS: <https://www.oasis.oati.com/cgi-bin/webplus.exe?Script=/woa/woa-login.wml>
2. In “Transactions” under NITS, select “Request Summary”



3. Select the New Request  icon in the upper, right-hand corner of the gray band above the field headers
4. Select “Add/Modify Resource”



5. Populate the Application fields:



5.1. "Select a Provider:"

5.1.1. Select "SWPP" in this field

5.2. "Application Ref:"


5.2.1. Enter your "Application Ref" here – for this example, we will use Application Ref # 2298

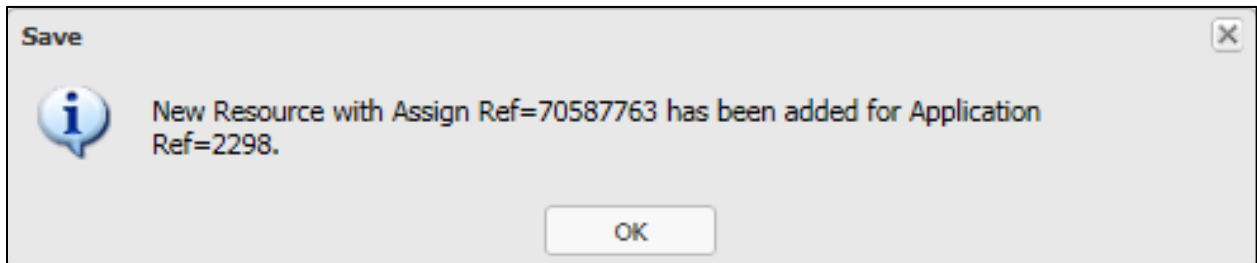
8.1. "Resource Name *:" Select the appropriate Generation Name from the Drop Down menu

6. The Resource Name will be populated in NITS Resource Description section, and other items in the Application Fields are ready to be modified now:

7. Modify the Application fields as needed:

Figure 5: In this example, King Candy has modified Resource Request Payday_1.

8. When all required fields are completed (highlighted in example above), select the Submit  icon at the upper, right-hand side of the template
9. A “Save” window will open containing the new Resource “Assignment Ref” and the “Application Ref” it was added to.



Section 5a: Required Fields for “Add/Modify Resource”

1. Provider: For SPP customers, this field will be “SWPP”
2. Application Ref: The Application Ref # associated with the generation request
3. Resource Name: The Resource Name will match the name you created in the Generator Details section, when you submit, the Resource name will be populated in NITS Resource Description section, and other items in the Application Fields are ready to be completed now:
4. Status:
 - 4.1. Queued: If this option is selected, once you hit submit, the application will go into a queued state and if everything is completed correctly will automatically go to either an “Accepted” state or to a “Confirmed” state depending on your selection in the “Preconfirmed” field
 - 4.2. Presubmitted: If this option is selected, when you hit submit, the application will be saved and the customer can continue working on it until it is ready to be submitted in a “Queued” state
5. Preconfirmed:
 - 5.1. No: Customer will need to “confirm” request once it has been accepted
 - 5.2. Yes: Request will automatically go into a “Confirmed” state if everything is completed correctly
6. Resource Class:
 - 6.1. ON_SYSTEM: For a resource in SPP footprint
 - 6.2. OFF_SYSTEM: For a resource not in SPP footprint
7. Resource Type:
 - 7.1. GENERATION: For owned Generation
 - 7.2. EXECUTED_PPA: For purchased Generation
8. Forecast Method: Forecast is required, select “ON_OASIS”
9. Source Area:
 - 9.1. SWPP: For a resource in SPP footprint
 - 9.2. Area Name: For a resource not in SPP footprint
10. Title Area: Generally equal to Source Area
11. Effective Start Time for Resource Forecast: Must be submitted no later than 24 hours in advance of queue date
12. Effective Stop Time for Resource Forecast: Cannot be less than 1 year after start date and must cover term of the intended designation

Section 5b: Optional Fields for “Add/Modify Resource”

1. Customer Comments: optional field for customer use
2. Resource Description: optional field for customer use.

Section 5c: Do Not Change Fields for “Add/Modify Resource”

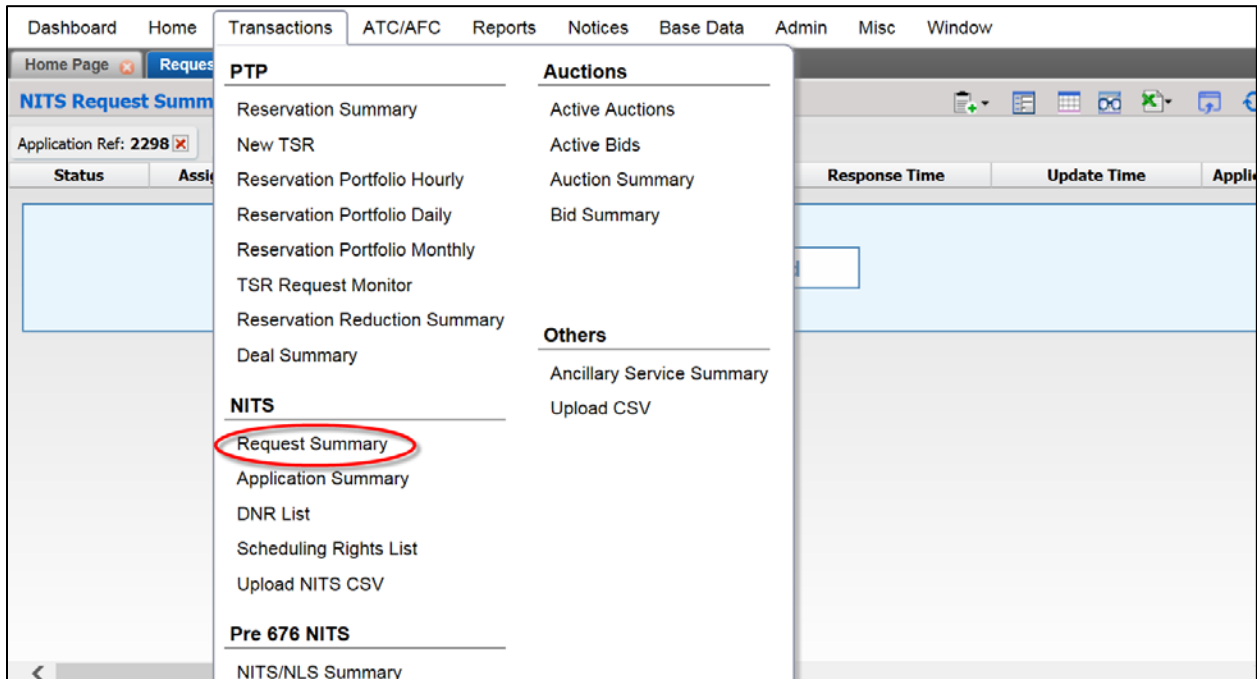
1. Status Comments: Please do not populate this field
 - 1.1. This field will describe any errors encountered once the request has been submitted
2. Provider Comments: Please do not populate this field
3. Seller Comments: Please do not populate this field
4. Effective Start Date of the Resource Cannot be modified (grayed out)

Designating Extension of the Network Resource (Renewals)

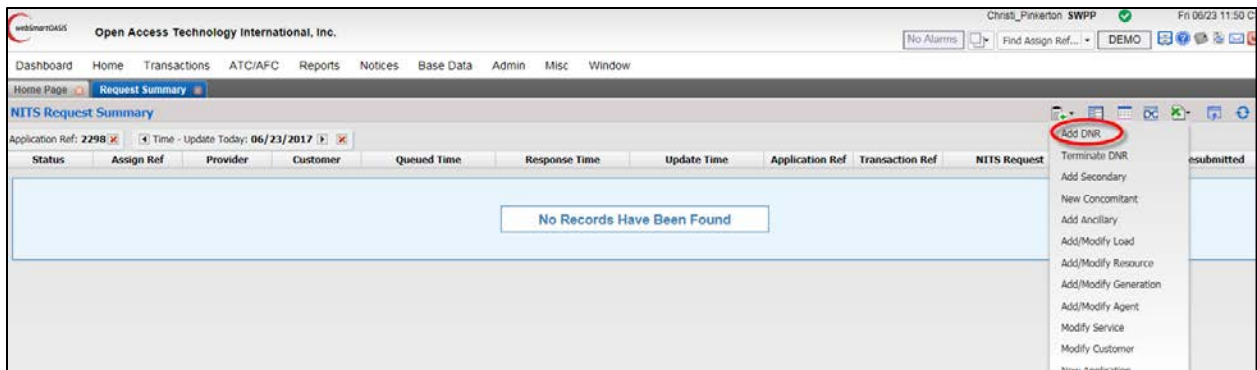
You will need to know the “Application Ref” and the “Resource Name” in order to complete this request template.

Section 6: Designation Extension of Existing Resource (Renewals)

1. Log into OASIS: <https://www.oasis.oati.com/cgi-bin/webplus.exe?Script=/woa/woa-login.wml>
2. In “Transactions” under NITS, select “Request Summary”



3. Select “Add DNR” in Drop Down menu



4. Select Provider “SWPP”, Select Appropriate Application Ref and Select Appropriate Resource Name:

AddNITSDNREntry

Request Information

Provider: SWPP Application Ref: 2298:AEPM-AEPM_8888_CAND Status: QUEUED Preconfirmed: YES

Status Comments: Customer Comments: Payday_1 DNR extension

Provider Comments: Seller Comments:

NITS Resource Designation

Resource Name *: PAYDAY_1 DNR Action: DESIGNATION_EXTENSION POR: CSWS Source: CSWS.RKYRIDGE

Posting Ref: Sale Ref: Request Ref: Deal Ref:

Attested: YES Attestor Name: King Candy Attestation Submitter: King Candy

DNR Attestation: All of the Network Resources listed pursuant to Section 29.2(v) satisfy the following conditions: (1) the Network Customer owns the resource, has committed to purchase generation pursuant to an executed contract, or has committed to purchase generation where execution of a contract is contingent upon the availability of transmission service under Part III of the Tariff; and (2) the Network Resources do not include any resources, or any portion thereof, that are committed for sale to non-designated third party load or otherwise cannot be called upon to meet the Network Customer's Network Load on a noninterruptible


CG Status:

NITS Resource Capacity

Start Time: 05/31/2019 23 0 CS Stop Time: 05/31/2024 23 0 CS MW: 100 Gen Name:

25 Hr 24 Hr H D W M Y Other

Figure 6: In this example, King Candy, has Renewed Resource Designation Request for Payday_1

5. When all required fields are completed (highlighted in example above), select the Submit  at the upper, right-hand side of the template
6. A "Save" window will open containing the Application Ref and the Assignment Ref (TSR number) related to the NITS Application.

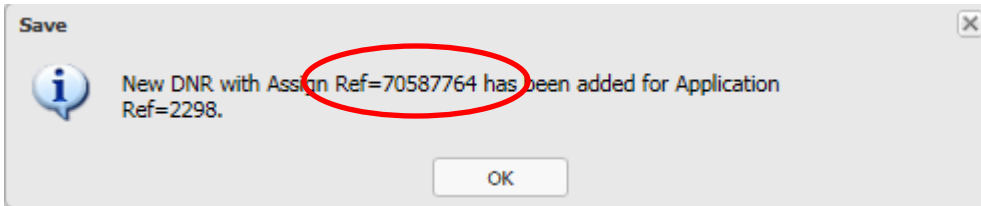


Figure 7: You will need the Application Ref for all other request templates related to this service ("Add/Modify Load," "Add/Modify Generation," "Add/Modify Resource" and "Add DNR")

Section 6a: Required Fields for “Add NITSDNR”

1. Provider: For SPP customers, this field will be “SWPP”
2. Application Ref: The Application Ref # associated with the generation request
3. Resource Name: selected from drop-down menu
4. Status:
 - 4.1. Queued: If this option is selected, once you hit submit, the application will go into a queued state and if everything is completed correctly will automatically go to either an “Accepted” state or to a “Confirmed” state depending on your selection in the “Preconfirmed” field (see **item 3** below)
 - 4.2. Presubmitted: If this option is selected, when you hit submit, the application will be saved and the customer can continue working on it until it is ready to be submitted in a “Queued” state
5. Preconfirmed:
 - 5.1. No: Customer will need to “confirm” request once it has been accepted
 - 5.2. Yes: Request will automatically go into a “Confirmed” state if everything is completed correctly
6. DNR Action: select “DESIGNATION”
7. POR: Point of Receipt
8. Source: Registered OASIS Source name
9. Attested: This field must be changed to “Yes”
10. Attestor Name: Should be a person with the authority sign the Attestation form
11. Attestation Submitter: Should be the user creating the Application in OASIS
12. Start Date: Cannot be in the past (no earlier than 6 months after start of Aggregate study)
(For Renewals, Tariff Requirements in Section 2.2 will apply.)
13. Stop Date: Cannot be less than 1 year after start date
14. Gen Name: Must match the name you created in the Generator Details section
15. Capacity Requested: Amount of capacity to be studied for service

Section 6b: Optional Fields for “Add NITSDNR”

1. Customer Comments: Any notes the customer would like to add to the request
2. Filing Status: optional field

Section 6c: Do Not Change Fields for “Add NITSDNR”

1. Status Comments: Please do not populate this field
2. Provider Comments: Please do not populate this field
3. Seller Comments: Please do not populate this field
4. Customer Statement: Please do not modify this field

VIEW NITS APPLICATION SUMMARY

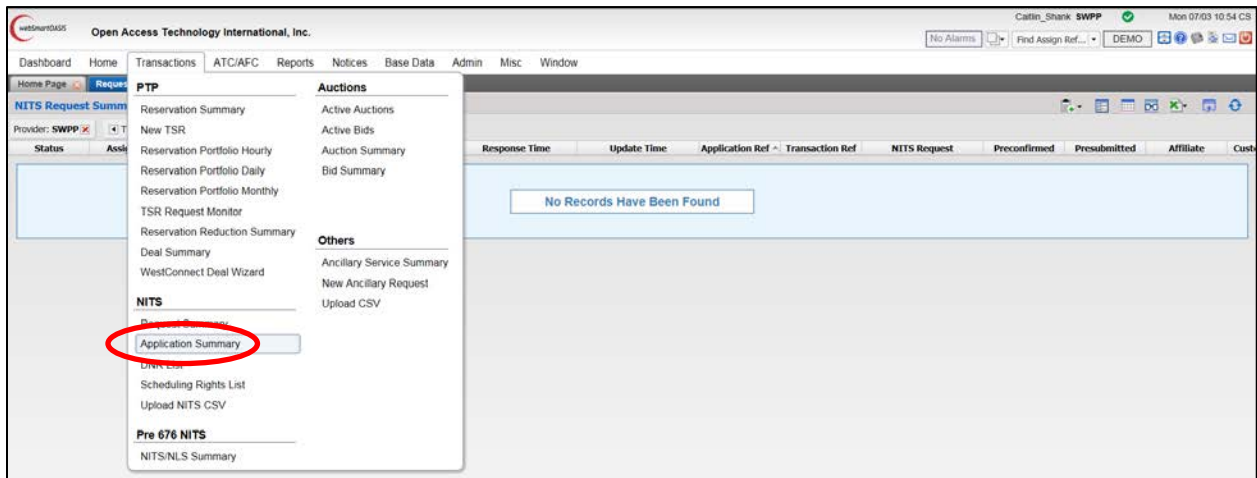
To view all service details for Load, Generation Details and Resource Details associated with a NITS application, please use the following steps:


Please note: Requests in the following States will be available in the summary view:

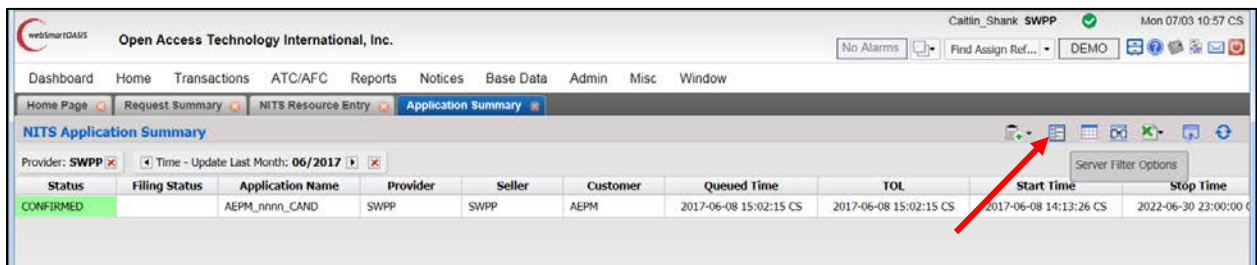
1. Confirmed
2. Completed
3. Study
4. Deficient

Application Summary

1. Log into OASIS: <https://www.oasis.oati.com/cgi-bin/webplus.exe?Script=/woa/woa-login.wml>
2. In “Transactions” under NITS, select “Application Summary”



3. Select the Server Filter Options  icon in the upper, right-hand corner of the gray band above the field headers



4. Using the “Customer” field and changing the “Time” to “Update” and “All” will be the easiest way to find the NITS Application you are looking for.

Filtering Options

Provider: SWPP Customer: AEPM

Status: ALL Affiliate: ALL

App Ref:

Time: Update ALL

Presubmitted: Reset Client Filters:

5. Add filters and select “Apply”
6. For this example, we will use Application Ref: 2298 since we built it in the prior examples.
7. Select 2298 in the “Application Ref” column

Status	Filing Status	Application Name	Provider	Seller	Customer	Queued Time	TOL	Start Time	Stop Time	Application Ref
CONFIRMED		AEPM_1606_BVILLE	SWPP	SWPP	AEPM	2017-01-18 14:31:59 CS	2017-01-18 14:31:59 CS	2013-01-01 00:00:00 CS	2033-01-01 00:00:00 CS	1917
CONFIRMED		AEPM_2956_SVEC	SWPP	SWPP	AEPM	2017-01-18 14:31:59 CS	2017-01-18 14:31:59 CS	2015-01-01 00:00:00 CS	2020-01-01 00:00:00 CS	1918
CONFIRMED		HOPE_1607_MAIN	SWPP	SWPP	AEPM	2017-01-18 14:32:01 CS	2017-01-18 14:32:01 CS	2008-01-01 00:00:00 CS	2033-01-01 00:00:00 CS	1932
CONFIRMED		MIND_1768_MAIN	SWPP	SWPP	AEPM	2017-01-18 14:32:10 CS	2017-01-18 14:32:10 CS	2009-03-17 23:00:00 CS	2029-03-17 23:00:00 CS	1967
CONFIRMED		AEPW_1148_MAIN	SWPP	SWPP	AEPM	2017-01-19 17:38:01 CS	2017-01-19 17:38:01 CS	2007-08-31 23:00:00 CS	2033-01-01 00:00:00 CS	2071
CONFIRMED		AEPM_nnnv_CAND	SWPP	SWPP	AEPM	2017-06-08 15:02:15 CS	2017-06-08 15:02:15 CS	2017-06-08 14:13:26 CS	2022-06-30 23:00:00 CS	2298

8. The “NITS Application Detail” window will open displaying a summary of the Load, Generation Detail and Resource Details associated with the NITS Application.

NITS Application Detail - Internet Explorer

https://demo.oasis.ortb.com/webSmartOASIS/NITSApplicationDetail?AppRef:2298&AppID:2298&Provider:SWPP&UserType:TPUser&ProviderID:112315&Status:CONFIRMED

NITS Application Detail [ApplicationRef: 2298] - CONFIRMED

NITS Application Detail NITS Load Forecast NITS Generation Dispatch NITS Resource Forecast

NITS Service

Provider	Application Name	Application Ref	QueuedTime	Service Description	Filing Status	StartTime	StopTime	Time Of Last Update
SWPP	AEPM_nnnv_CAND	2298	2017-06-08 15:02:15 CS	This is Service for all the land of candy.		2017-06-08 14:13:26 CS	2022-06-30 23:00:00 CS	2017-06-08 15:02:15 CS

NITS Customer

Customer Code	Customer Duns	Customer Name	Customer Pfx	Customer Fax	Customer Email	Status Notification	Customer Statement	Attorney Name	Attestation Submitter	Customer Comments	Affiliate Flag	Effective StartTime	Effective StopTime	Time of Last Update		
AEPM	00079070	AEP Marketing								mailto:cahank@spc.org	The party requesting service is, King Candy	King Candy	No	2017-06-08 01:00:00 CS	3000-01-01 00:00:00 CS	2017-06-08 15:02:15 CS

NITS Agent

No Records Have Been Found

NITS Load Description

Load Name	Status	Load Type	Load Area	Load Substation	Load Voltage	POD	Sink	Load Description	Forecast Method	Effective Start Time	Effective Stop Time	Time of Last Update
SHOCKERS_CSWS	CONFIRMED	FIXED	SWPP		0	CSWS	CSWS		ON_OASIS	2017-12-01 00:00:00 CS	2022-12-01 00:00:00 CS	2017-06-20 15:30:18 CS

NITS Generation Description

Gen Name	Status	Gen Group	Area	Location	Operator	Share	Max MW	Min MW	Normal MW	Eligible MW	Var Leading	Description	Effective Start Time	Effective Stop Time	Time of Last Update
PA/DAY_1	CONFIRMED	PA/DAY	SWPP	ALBUQUERQUE	AEP	1	150	0	150	100	0	Payday Solar Unit 1	2017-12-01 00:00:00 CS	3000-01-01 00:00:00 CS	2017-06-20 14:31:20 CS

NITS Resource Description

Resource Name	Status	Resource Class	Resource Type	Source Area	Title Area	Resource Description	Forecast Method	Effective StartTime	Effective StopTime	Time of Last Update
BUTTERFLYGER_1	CONFIRMED	ON_SYSTEM	EXCLUDED_PPA	SWPP	SWPP	Resource details for Butterflyger purchase	ON_OASIS	2017-06-30 16:00:00 CS	3000-01-01 00:00:00 CS	2017-06-20 16:21:36 CS
PA/DAY_1	CONFIRMED	ON_SYSTEM	GENERATION	SWPP	SWPP	Payday Unit 1 Solar generation	ON_OASIS	2017-12-01 00:00:00 CS	3000-01-01 00:00:00 CS	2017-06-20 14:48:18 CS

VIEW DESIGNATED NETWORK RESOURCES (DNRS) SUMMARY

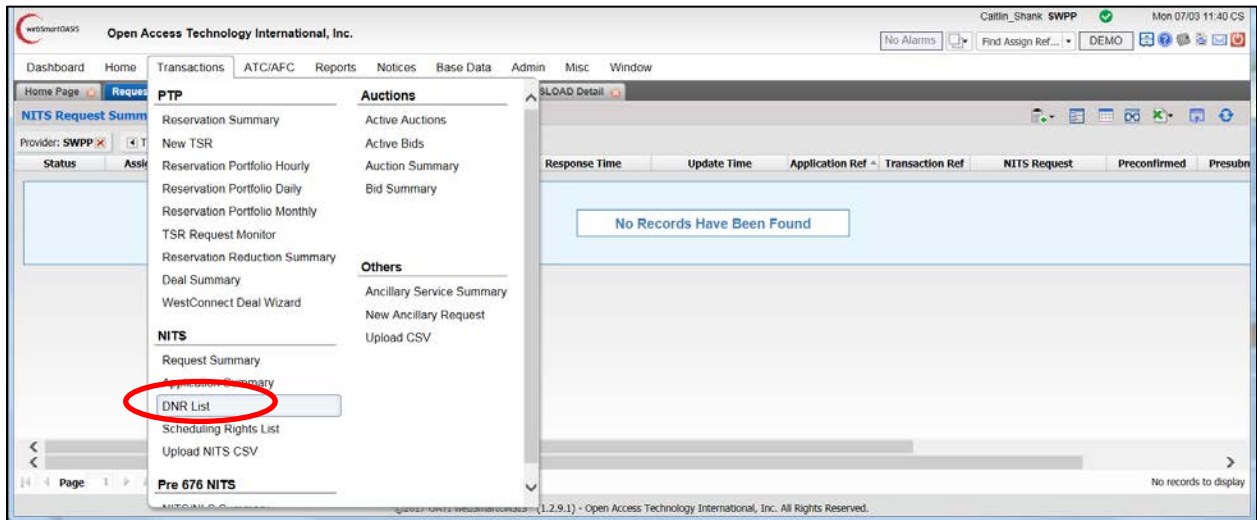
To view all DNRs associated with a NITS application, please use the following steps:


Please note: Only requests in the “Confirmed” State will be available in this summary view.

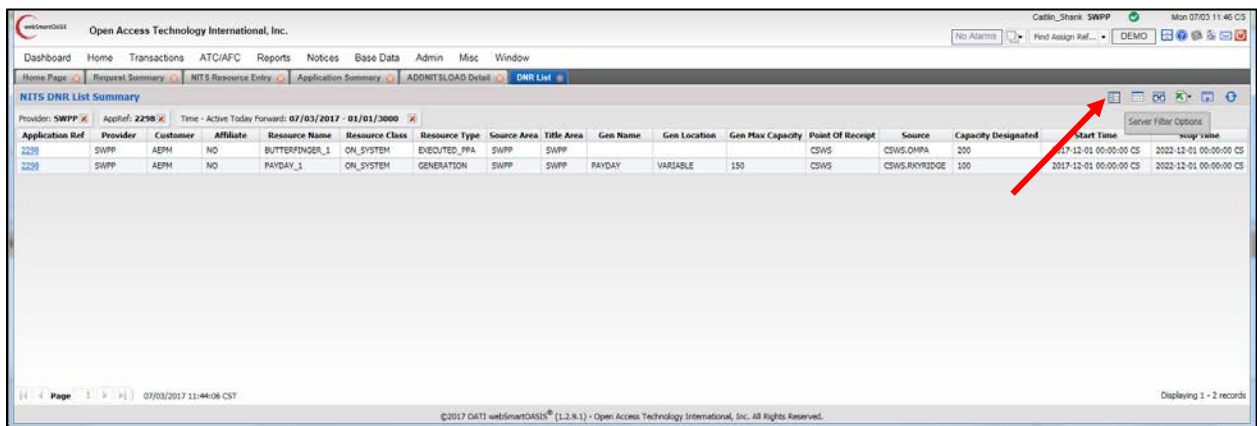
For this example, we will continue to use Application Ref 2298.

DNR Summary

1. Log into OASIS: <https://www.oasis.oati.com/cgi-bin/webplus.exe?Script=/woa/woa-login.wml>
2. In “Transactions” under NITS, select “DNR List”



3. Select the Server Filter Options  icon in the upper, right-hand corner of the gray band above the field headers



- Use the “Appl Ref” field and change the “Time” to “Active” and “Today Forward” and all “Confirmed” Designations will populate that are associated with the NITS Application.

Filtering Options ✕

Provider: SWPP **Appl Ref:** 2298 **Customer:** ALL
Resource: **POR:** ALL **Source:** ALL
Gen Name: **Affiliate:** ALL
Time: Active Today Forward 07/03/2017 01/01/3000 **Reset Client Filters:**

- Add filters and select “Apply”
- A high-level summary of all designations associated with Application Ref 2298 is now available.

The screenshot shows the 'NITS DNR List Summary' table with the following data:

Application Ref	Provider	Customer	Affiliate	Resource Name	Resource Class	Resource Type	Source Area	Title Area	Gen Name	Gen Location	Gen Max Capacity	Point Of Receipt	Source	Capacity Designated	Start Time	Stop Time
2298	SWPP	ABPM	NO	BUTTERFINGER_1	ON_SYSTEM	EXCLUDED_PPA	SWPP	SWPP	PAYDAY	VARIABLE	150	CSWS	CSWS.OMPA	200	2017-12-01 00:00:00 CS	2022-12-01 00:00:00 CS
2298	SWPP	ALPM	NO	PAYDAY_1	ON_SYSTEM	GENERATION	SWPP	SWPP	PAYDAY	VARIABLE	150	CSWS	CSWS.RKYRIDGE	100	2017-12-01 00:00:00 CS	2022-12-01 00:00:00 CS

DEFICIENT REQUESTS

If a field is incorrectly populated when submitting a request in any of the NITS on OASIS templates, it will come back in a “Deficient” state.

Some items that will cause a template to fail are:

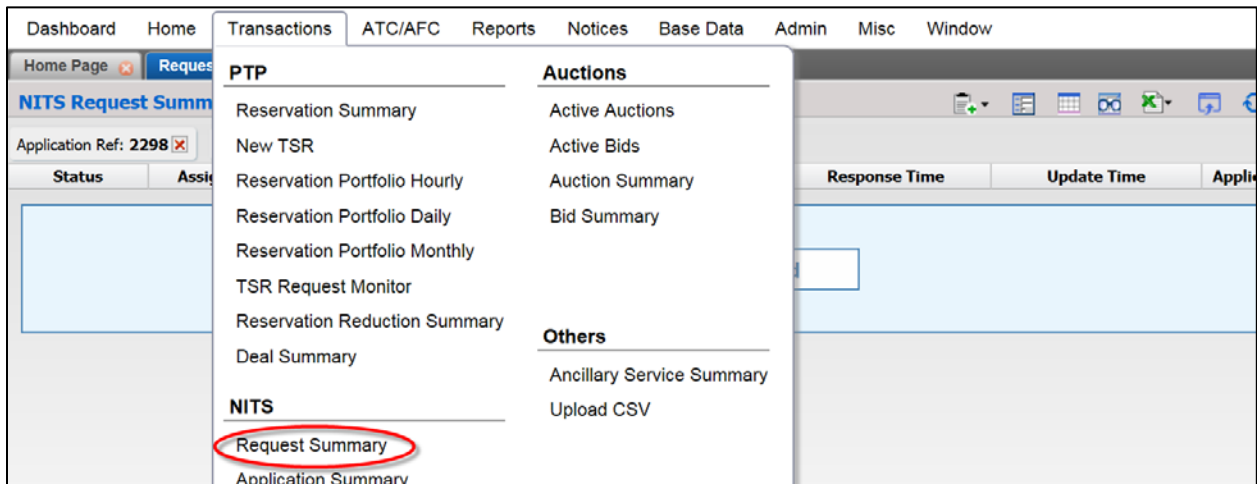
1. Timing requirements have not been met
2. Attestation was not completed for:
 - a. NITS Application
 - b. DNR Request
3. DNR Designated Capacity amount > Generation Eligible Amount


If your request comes back “Deficient” please review the “Required Fields” section associated with the “Deficient” request.

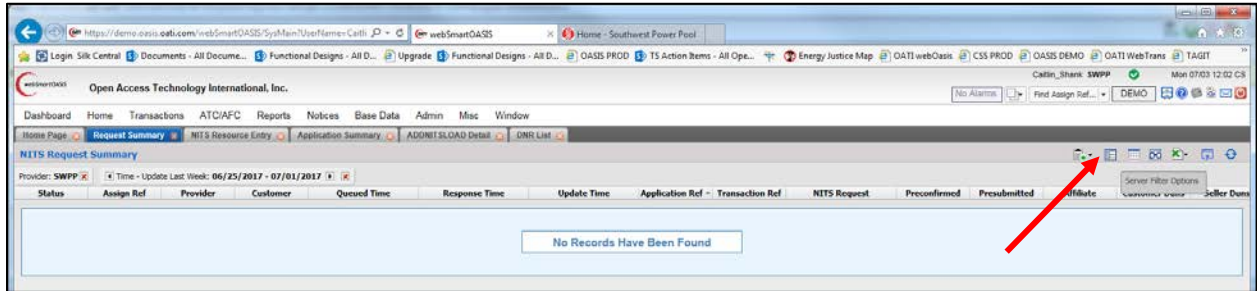
To correct the error(s), the request can be edited and then submitted for “Re-Evaluation” by using the following steps:

Correcting a Deficient Request

1. Log into OASIS: <https://www.oasis.oati.com/cgi-bin/webplus.exe?Script=/woa/woa-login.wml>
2. In “Transactions” under NITS, select “Request Summary”



3. Select the Server Filter Options  icon in the upper, right-hand corner of the gray band above the field headers



4. Enter the Appl Ref associated with the Deficient request

Filtering Options

Provider: SWPP Auto

Customer: ALL Auto

Request: ALL Auto

Status: ALL Auto

Appl Ref: 2298 Auto

Assign Ref: Auto

Trans Ref: Auto

Sale Ref: Auto

Request Ref: Auto

Deal Ref: Auto

Affiliate: ALL Auto

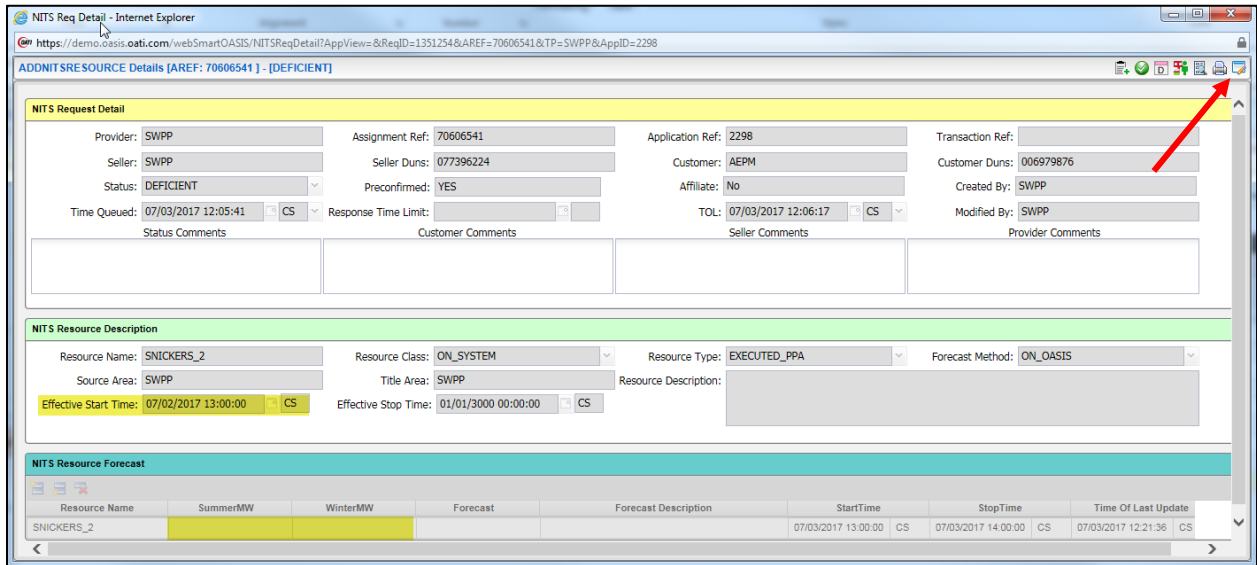
CG Status: ALL Auto

Apply Reset Show

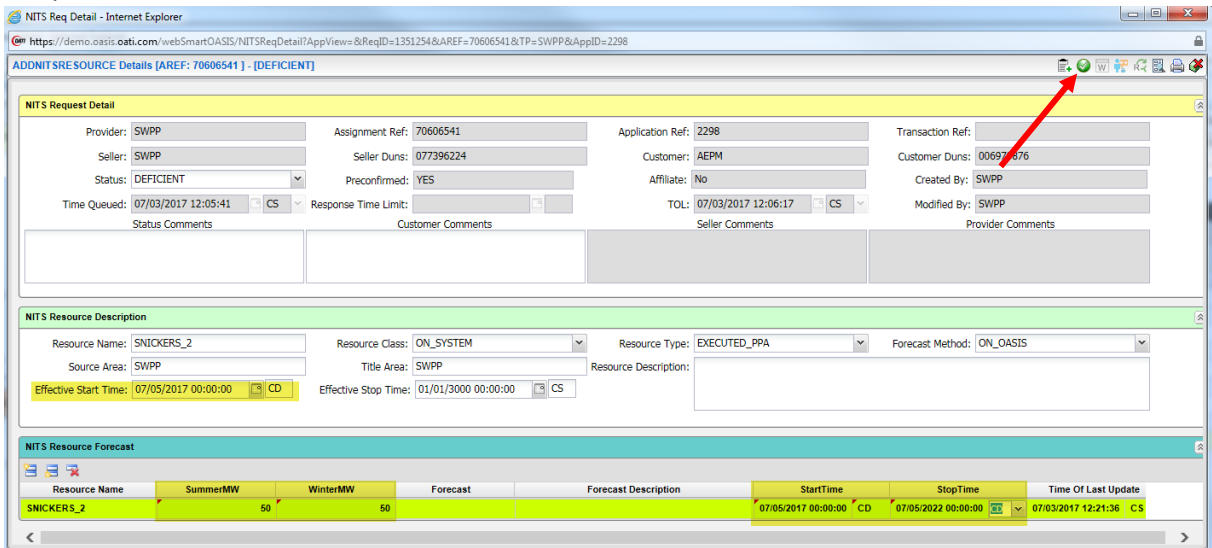
5. Select "Apply"


Status	Assign Ref	Provider	Customer	Queued Time	Response Time	Update Time	Application Ref	Transaction Ref	NITS Request	Preconfirmed	Presubmitted	Affiliate	Customer Duns	Seller Duns
CONFIRMED	70566466	SWPP	AEPH	2017-06-08 15:02:15 CS		2017-06-09 08:27:15 CS	2298		NEWNITSAPPLICATION	YES	NO	NO	006979876	077396224
ANNULLED	70566440	SWPP	AEPH	2017-06-09 08:56:03 CS		2017-06-20 15:26:25 CS	2298		ADONITSLOAD	YES	NO	NO	006979876	077396224
CONFIRMED	70567751	SWPP	AEPH	2017-06-20 14:05:44 CS		2017-06-20 15:30:18 CS	2298		ADONITSLOAD	NO	NO	NO	006979876	077396224
CONFIRMED	70567757	SWPP	AEPH	2017-06-20 14:22:45 CS		2017-06-20 14:31:20 CS	2298		ADONITSGENERATION	NO	NO	NO	006979876	077396224
CONFIRMED	70567761	SWPP	AEPH	2017-06-20 14:48:18 CS		2017-06-20 15:30:53 CS	2298		ADONITRESOURCE	NO	NO	NO	006979876	077396224
CONFIRMED	70567764	SWPP	AEPH	2017-06-20 15:00:26 CS		2017-06-20 15:31:32 CS	2298		ADONITSDNR	NO	NO	NO	006979876	077396224
CONFIRMED	70567771	SWPP	AEPH	2017-06-20 15:21:36 CS		2017-06-20 15:34:51 CS	2298		ADONITRESOURCE	NO	NO	NO	006979876	077396224
CONFIRMED	70567774	SWPP	AEPH	2017-06-20 15:28:55 CS		2017-06-20 15:35:38 CS	2298		ADONITSDNR	NO	NO	NO	006979876	077396224
DEFICIENT	70566551	SWPP	AEPH	2017-07-03 12:05:41 CS		2017-07-03 12:06:17 CS	2298		ADONITRESOURCE	YES	NO	NO	006979876	077396224

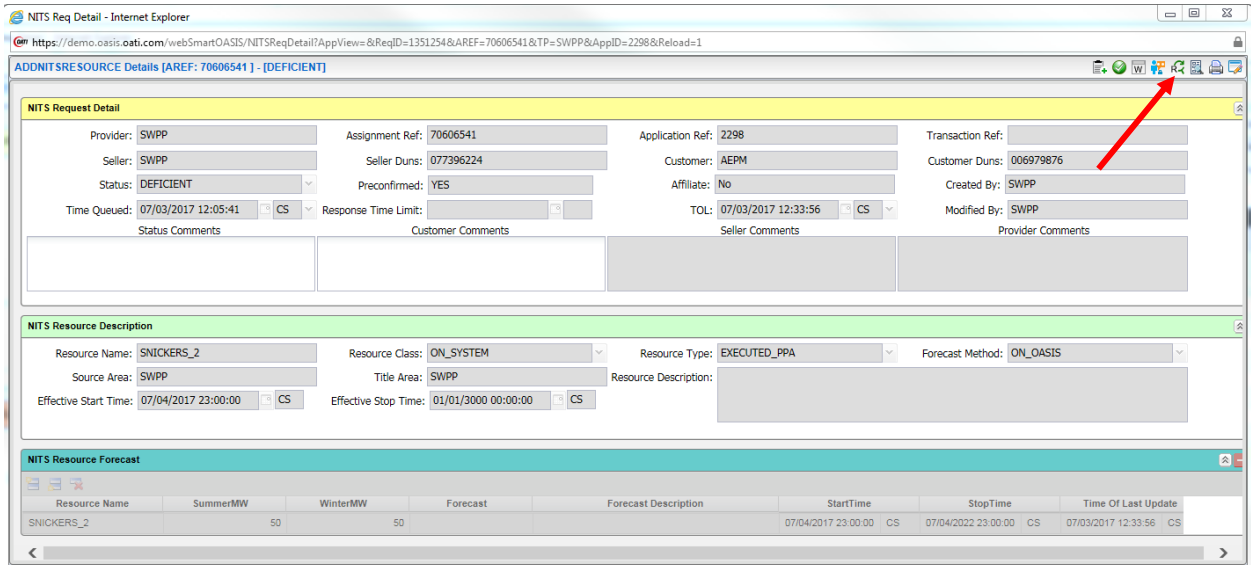
6. Select the deficient request in the "Assign Ref" column



7. The above request is deficient for 2 reasons:
 - 7.1. Effective Start Time is in the past
 - 7.2. No resource forecast was included with the request
8. To correct the errors, select the Edit icon at the upper, right-hand side of the template
 - 8.1. Update the “Effective Start Time” to be 24 hours after the queue time of the request
 - 8.2. Add the Summer and Winter forecasts
 - 8.2.1. Make sure the Start and Stop time are updated to reflect the span of the forecast being submitted
9. Once these updates have been made, select the Submit icon at the upper, right-hand side of the template



10. Next, select the ReEvaluate  icon at the upper, right-hand side of the template



NITS Request Detail

Provider: SWPP Assignment Ref: 70606541 Application Ref: 2298 Transaction Ref:

Seller: SWPP Seller Duns: 077396224 Customer: AEPM Customer Duns: 006979876

Status: DEFICIENT Preconfirmed: YES Affiliate: No Created By: SWPP

Time Queued: 07/03/2017 12:05:41 CS Response Time Limit: TOL: 07/03/2017 12:33:56 CS Modified By: SWPP

Status Comments Customer Comments Seller Comments Provider Comments

NITS Resource Description

Resource Name: SNICKERS_2 Resource Class: ON_SYSTEM Resource Type: EXECUTED_PPA Forecast Method: ON_OASIS

Source Area: SWPP Title Area: SWPP Resource Description:

Effective Start Time: 07/04/2017 23:00:00 CS Effective Stop Time: 01/01/3000 00:00:00 CS

NITS Resource Forecast

Resource Name	SummerMW	WinterMW	Forecast	Forecast Description	StartTime	StopTime	Time Of Last Update
SNICKERS_2	50	50			07/04/2017 23:00:00	07/04/2022 23:00:00	07/03/2017 12:33:56

11. The OASIS system will revalidate the request and if there are no errors, it will move the request into one of the following states depending on the request type:

11.1. Study State:

- 11.1.1. Add DNR
- 11.1.2. Add/Modify Load

11.2. Accepted State:

- 11.2.1. New Application
- 11.2.2. Add/Modify Generation
- 11.2.3. Add/Modify Resource